

Milk Paint & Glaze Designs

This page is available at www.generalfinishes.com.

You can create customized designer looks and save thousands of dollars by applying our finishes on real wood furniture from your local unfinished furniture retailer. And it's all made in America, right in Wisconsin.



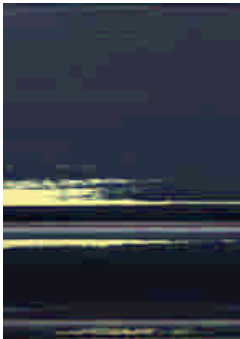
Distressing is the technique of marking wood to mimic the character of generations of use. The most common form is distress sanding. Other tools can be used to give further aging dimension to wood; hammers, nails, screws, old hardware, literally anything you can pound into the wood that would leave an imprint. Then start hammering away. If it's been a long week and you need a lift, start a little character therapy project for yourself. Get rid of all that stress and distress a piece of furniture at the same time!

Antiquing is another form of distressing using sanding techniques, often followed by glazing to give the appearance of an antique piece of furniture that has been well taken care of over the years but, has slight natural wear and discoloration on the doors, edges, or sides.

Glazing is the process of applying a translucent color to the surface, and then rubbing off the excess to create decorative effects.

In the following examples, several layers of GF Milk Paints, GF Glaze Effects and GF Top Coats are combined in the tradition of old world craftsmen to create unique, distressed looks in any color palette. Today's designer finishes often combine many different layers of color and top coats to create spectacular finish designs. The work goes fast as water based finishes dry much more quickly than oil based finishes. Choose from any of these designs or create your own. All base colors are two coats. Always use a coat of topcoat between paint colors to prevent color blending. Finish your piece with an optional 1 or 2 coats of water based top coat. See water based finishing tips at www.generalfinishes.com for more details on applying waterbase finishes.

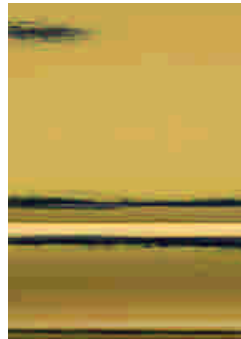
Two Color Finish Samples: Milk Paint over Milk Paint plus Top Coats



1. Two coats of Butter Milk MP
2. One coat of Top Coat to prevent color blending
3. Two coats of Coastal Blue MP sanded through
4. One or two coats of Top Coat



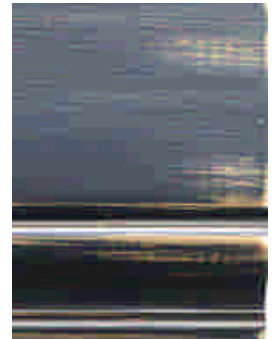
1. Two coats of Sierra Gold MP
2. One coat of Top Coat to prevent color blending
3. Two coats of Coastal Blue MP sanded through
4. One or two coats of Top Coat



1. Two coats of Coastal Blue MP
2. One coat of Top Coat to prevent color blending
3. Two coats of Sierra Gold MP sanded through
4. One or two coats of Top Coat



1. Two coats of Coastal Blue MP
2. One coat of Top Coat to prevent color blending
3. Two coats of Linen MP sanded through
4. One or two coats of Top Coat



1. Two coats of Outback Brown MP
2. One coat of Top Coat to prevent color blending
3. Two coats of Lamp Black MP sanded through
4. One or two coats of Top Coat



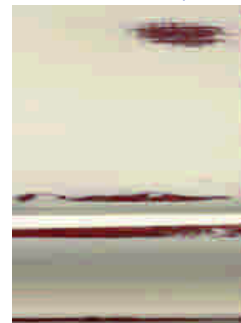
1. Two coats of Lamp Black MP
2. One coat of Top Coat to prevent color blending
3. Two coats of Millstone MP sanded through
4. One or two coats of Top Coat



1. Two coats of Lamp Black MP
2. One coat of Top Coat to prevent color blending
3. Two coats of Linen MP sanded through
4. One or two coats of Top Coat



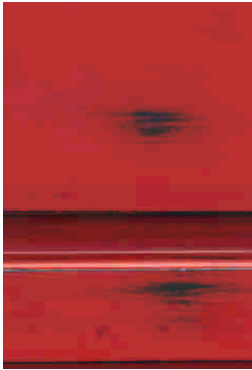
1. Two coats of Lamp Black MP
2. One coat of Top Coat to prevent color blending
3. Two coats of Snow White MP sanded through
4. One or two coats of Top Coat



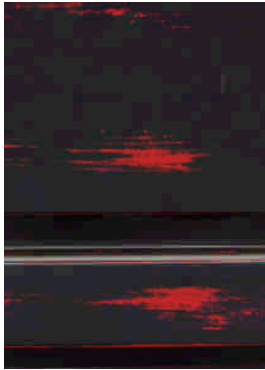
1. Two coats of Tuscan Red MP
2. One coat of Top Coat to prevent color blending
3. Two coats of Antique White MP sanded through
4. One or two coats of Top Coat



1. Two coats of Tuscan Red MP
2. One coat of Top Coat to prevent color blending
3. Two coats of Sierra Gold MP sanded through
4. One or two coats of Top Coat



1. Two coats of Lamp Black MP
2. One coat of Top Coat to prevent color blending
3. Two coats of Red Pepper MP sanded through
4. One or two coats of Top Coat



1. Two coats of Red Pepper MP
2. One coat of Top Coat to prevent color blending
3. Two coats of Lamp Black MP sanded through
4. One or two coats of Top Coat

Two Color Finish Samples: Milk Paint Used With One Coat of Glaze/Wood Stain plus Top Coat



1. Two coats of Snow White MP
2. Van Dyke Brown Glaze
3. One or two coats of Top Coat



1. Two coats of Antique White MP sanded through
2. Burnt Umber Glaze
3. One or two coats of Top Coat



1. Two coats of Millstone MP sanded through
2. Van Dyke Brown Glaze
3. One or two coats of Top Coat



1. Two coats of Basil Milk Paint
2. Van Dyke Brown Glaze
3. One or two coats of Top Coat



1. Two coats of Sage Green MP
2. Winter White Glaze
3. One or two coats of Top Coat



1. Two coats of Autumn Haze MP sanded through
2. Yellow Ochre Glaze
3. One or two coats of Top Coat



1. Two coats of Lamp Black MP sanded through
2. Red Sienna Glaze
3. One or two coats of Top Coat



1. Two coats of Brick Red MP
2. Van Dyke Brown Glaze
3. One or two coats of Top Coat



1. Two coats of Autumn Haze MP
2. Van Dyke Brown Glaze
3. One or two coats of Top Coat

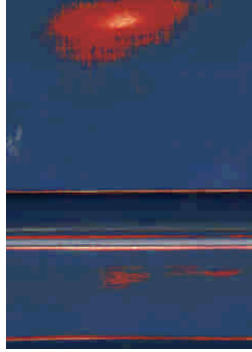


1. Two coats of Brick Red MP
2. One coat of Top Coat to prevent color blending
3. Espresso Stain
4. One or two coats of Top Coat

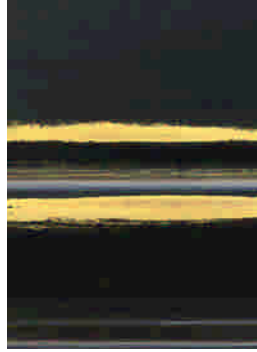
Three Color Finish Samples: Two Milk Paint Colors, layered one over the other, finished with a glaze



1. Two coats of Brick Red MP
 2. One coat of Top Coat to prevent color blending
 3. Two coats of Basil MP sanded through
 4. Yellow Ochre Glaze
 5. One or two coats of Top Coat
- Before and After**



1. Two coats of Brick Red MP
2. One coat of Top Coat to prevent color blending
3. Two coats of Federal Blue MP sanded through
4. Yellow Ochre Glaze
5. One or two coats of Top Coat



1. Two coats of Buttermilk MP
2. Two coats Lamp Black MP sanded through
3. Yellow Ochre Glaze
4. One or two coats of Top Coat



1. Two coats of Brick Red
2. One coat of Top Coat to prevent color blending
3. Two coats of Linen MP sanded through



4. Red Sienna Glaze
3. One or two coats of Top Coat



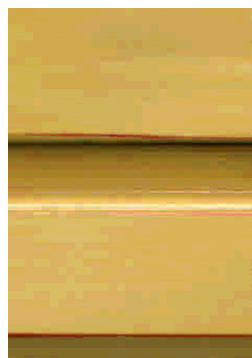
1. Two coats of Brick Red MP
2. One coat of Top Coat to prevent color blending
3. Two coats of Antique White MP sanded through



4. Van Dyke Brown Glaze
5. One or two coats of Top Coat



1. Two coats of Brick Red
2. One coat of Top Coat to prevent color blending
3. Two coats of Millstone MP sanded through



4. Yellow Ochre Glaze
5. One or two coats of Top Coat